

ALLEGRO

2008

2008 SPECIFICATIONS

TIFFIN MOTORHOMES

Allegro

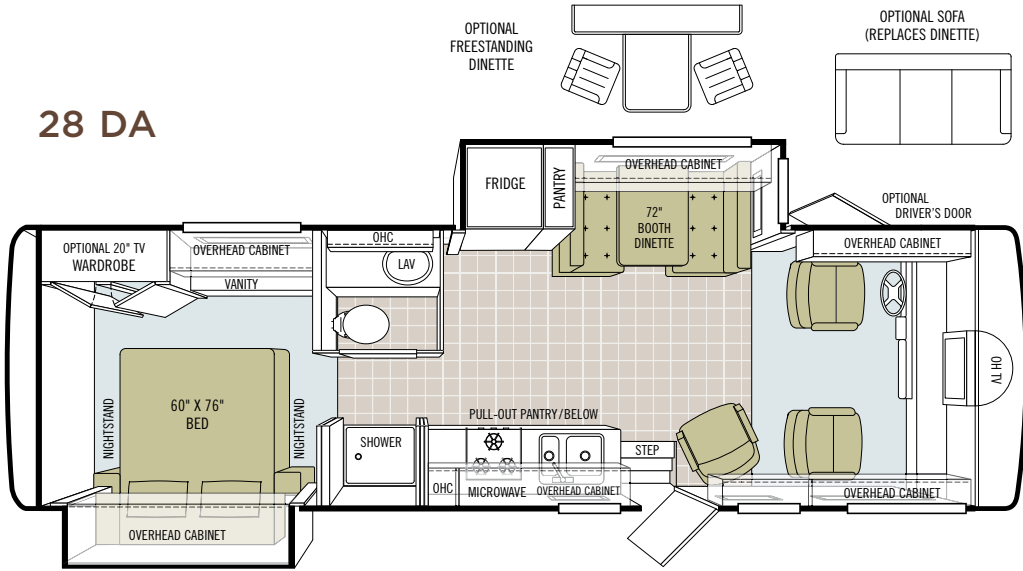


TIFFIN MOTORHOMES

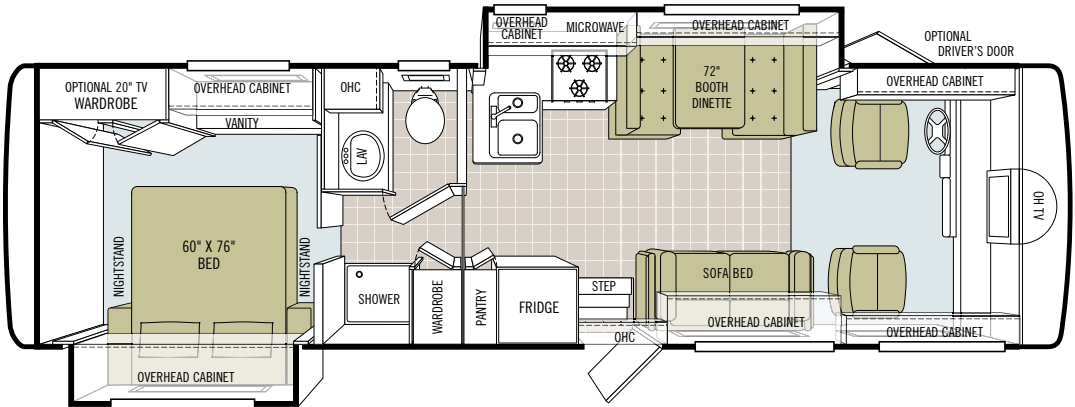
WHEREVER YOU GO, WE GO.

INTERIOR SPECS
FLOOR PLANS

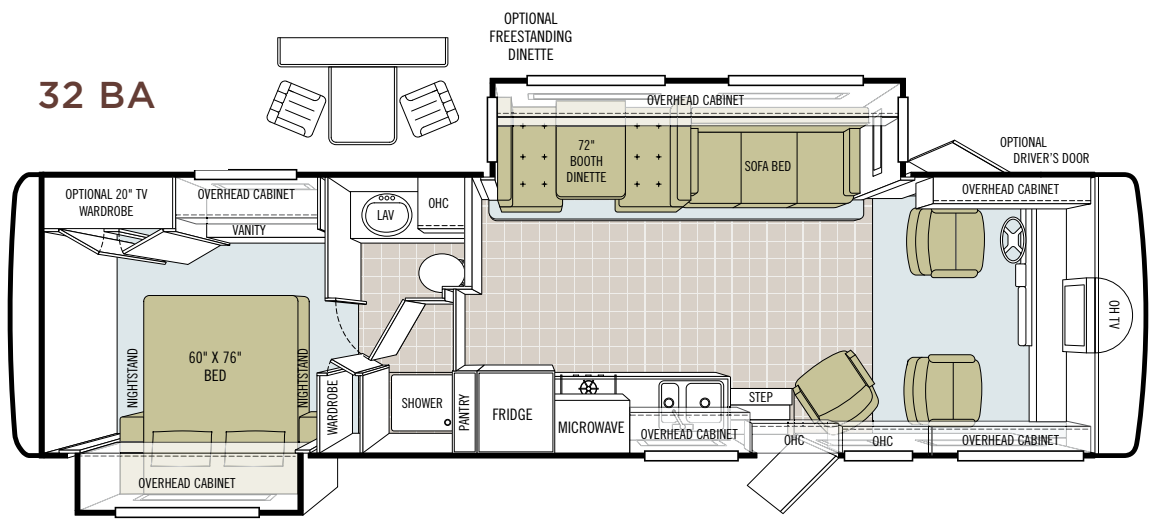
28 DA



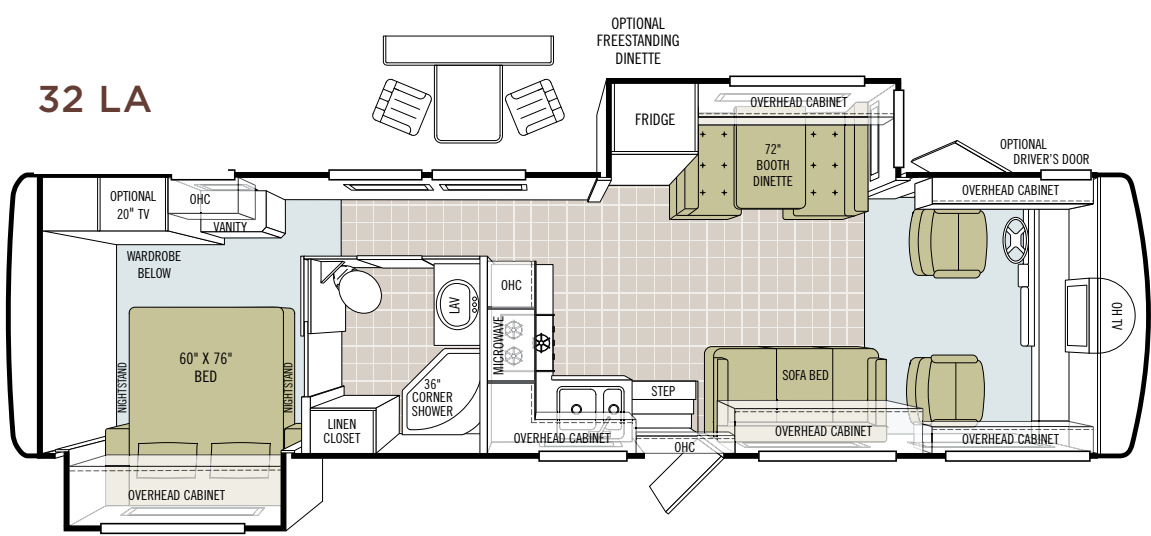
30 DA



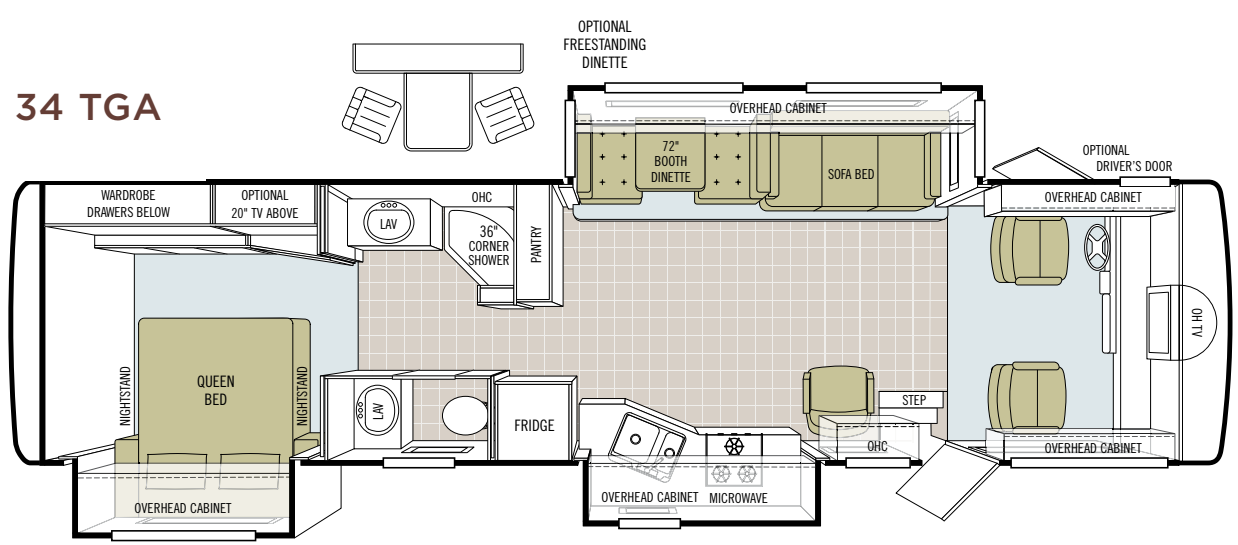
32 BA



32 LA



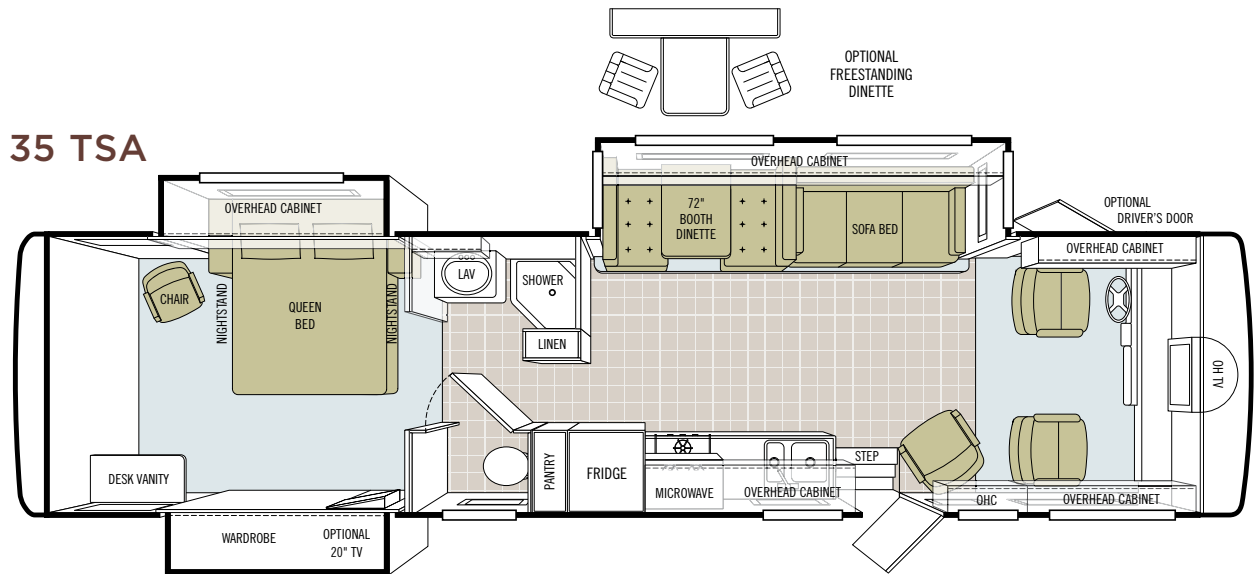
34 TGA



35 QBA



35 TSA



EXTERIOR SPECS
PAINT COLORS



BORDEAUX Partial Body



DRIFTWOOD Partial Body



CHAMPAGNE Full Body



SILVER SAND Full Body



SUNLIT SAND Full Body

**INTERIOR SPECS
CABINETS & FABRICS**

CABINET DOORS

All cabinet doors are made of solid wood.



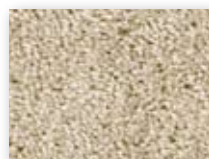
Natural Maple



Cherry Bark



Medium Alderwood

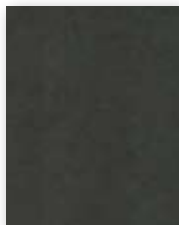


Carpet

MATISSE



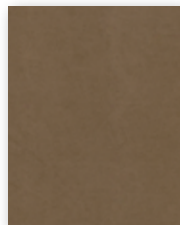
Bedroom



Bedroom Accent



Sofa/Chair



Living Area Accent



Dinette

MIRAGE



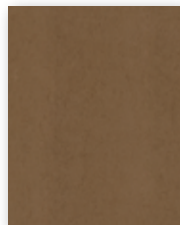
Bedroom



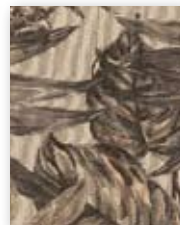
Bedroom Accent



Sofa/Chair



Living Area Accent

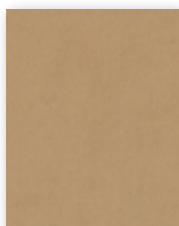


Dinette

SUNSET



Bedroom



Bedroom Accent



Sofa/Chair



Living Area Accent



Dinette

Our fabric designs and choices of wood grain are sure to suit every taste.
All cabinet finishes are available in combination with all fabric schemes.

TECHNICAL SPECS

AUTOMOTIVE

STANDARD EQUIPMENT ON ALL MODELS:

- TorqShift® 5-Speed Automatic Overdrive with Tow/Haul Mode (Ford)
- 1000 MH Series 6-Speed Automatic Allison Transmission with Overdrive (Workhorse)
- Leveling Jacks
- Cruise Control
- Emergency Start Switch

| FORD CHASSIS | 28 DA | 30 DA | 32 BA | 32 LA | 34 TGA | 35 QBA | 35 TSA |
|------------------------------|--------------|--------------|--------------|--------------|--------------|--------------|--------------|
| Engine - 362 HP | 6.8 L V10 | 6.8 L V10 | 6.8 L V10 | 6.8 L V10 | 6.8 L V10 | 6.8 L V10 | 6.8 L V10 |
| Torque (Lb.-Ft. Max. Net) | 457 @ 3250 | 457 @ 3250 | 457 @ 3250 | 457 @ 3250 | 457 @ 3250 | 457 @ 3250 | 457 @ 3250 |
| GVWR | 20,500 | 20,500 | 20,500 | 20,500 | 22,000 | 22,000 | 22,000 |
| GAWR - Front | 7,000 | 7,000 | 7,000 | 7,000 | 7,500 | 7,500 | 7,500 |
| GAWR - Rear | 13,500 | 13,500 | 13,500 | 13,500 | 14,000 | 14,000 | 14,000 |
| GCWR | 26,000 | 26,000 | 26,000 | 26,000 | 26,000 | 26,000 | 26,000 |
| UVW | 15,300 | 15,300 | 16,910 | 17,160 | 17,520 | 17,730 | 17,730 |
| Overall Height with Roof Air | 12' 3" | 12' 3" | 12' 3" | 12' 3" | 12' 3" | 12' 3" | 12' 3" |
| Wheel Base | 208 | 208 | 228 | 228 | 242 | 242 | 242 |
| Tire Size | 245/70R 19.5 | 245/70R 19.5 | 245/70R 19.5 | 245/70R 19.5 | 245/70R 19.5 | 245/70R 19.5 | 245/70R 19.5 |
| Fuel Tank (Gallons) | 75 | 75 | 75 | 75 | 75 | 75 | 75 |
| Alternator Amps | 130 | 130 | 130 | 130 | 130 | 130 | 130 |
| Trailer Hitch Capacity | 5,000 | 5,000 | 5,000 | 5,000 | 5,000 | 5,000 | 5,000 |

| WORKHORSE CHASSIS | 28 DA | 30 DA | 32 BA | 32 LA | 34 TGA | 35 QBA | 35 TSA |
|------------------------------|-------|--------------|--------------|--------------|--------------|--------------|--------------|
| Engine - 340 HP | NA | 8.1 L V8 | 8.1 L V8 | 8.1 L V8 | 8.1 L V8 | 8.1 L V8 | 8.1 L V8 |
| Torque (Lb.-Ft. Max. Net) | NA | 455 @ 3200 | 455 @ 3200 | 455 @ 3200 | 455 @ 3200 | 455 @ 3200 | 455 @ 3200 |
| GVWR | NA | 20,700 | 20,700 | 20,700 | 22,000 | 22,000 | 22,000 |
| GAWR - Front | NA | 7,500 | 7,500 | 7,500 | 8,000 | 8,000 | 8,000 |
| GAWR - Rear | NA | 13,500 | 13,500 | 13,500 | 14,500 | 14,500 | 14,500 |
| GCWR | NA | 26,000 | 26,000 | 26,000 | 26,000 | 26,000 | 26,000 |
| UVW | NA | 15,220 | 16,820 | 17,280 | 17,720 | 17,780 | 17,780 |
| Overall Height with Roof Air | NA | 12' 3" | 12' 3" | 12' 3" | 12' 3" | 12' 3" | 12' 3" |
| Wheel Base | NA | 208 | 228 | 228 | 242 | 242 | 242 |
| Tire Size | NA | 245/70R 19.5 | 245/70R 19.5 | 245/70R 19.5 | 245/70R 19.5 | 245/70R 19.5 | 245/70R 19.5 |
| Fuel Tank (Gallons) | NA | 75 | 75 | 75 | 75 | 75 | 75 |
| Alternator Amps | NA | 130 | 130 | 130 | 130 | 130 | 130 |
| Trailer Hitch Capacity | NA | 5,000 | 5,000 | 5,000 | 5,000 | 5,000 | 5,000 |

| FREIGHTLINER FRONT ENGINE DIESEL CHASSIS | 28 DA | 30 DA | 32 BA | 32 LA | 34 TGA | 35 QBA | 35 TSA |
|--|-------|-------|--------------|--------------|--------------|--------------|--------------|
| Engine - 300 HP | NA | NA | Cummins | Cummins | Cummins | Cummins | Cummins |
| GVWR | NA | NA | 24,000 | 24,000 | 24,000 | 24,000 | 24,000 |
| GAWR - Front | NA | NA | 9,000 | 9,000 | 9,000 | 9,000 | 9,000 |
| GAWR - Rear | NA | NA | 15,000 | 15,000 | 15,000 | 15,000 | 15,000 |
| GCWR | NA | NA | 26,000 | 26,000 | 26,000 | 26,000 | 26,000 |
| UVW | NA | NA | 18,320 | 18,780 | 19,200 | 19,380 | 19,380 |
| Overall Height with Roof Air | NA | NA | 12' 5" | 12' 5" | 12' 5" | 12' 5" | 12' 5" |
| Wheel Base | NA | NA | 228 | 228 | 242 | 242 | 242 |
| Tire Size | NA | NA | 235/80R 22.5 | 235/80R 22.5 | 235/80R 22.5 | 235/80R 22.5 | 235/80R 22.5 |
| Fuel Tank (Gallons) | NA | NA | 80 | 80 | 80 | 80 | 80 |
| Alternator Amps | NA | NA | 160 | 160 | 160 | 160 | 160 |
| Allison Transmission | NA | NA | S | S | S | S | S |

OVERALL

| | 28 DA | 30 DA | 32 BA | 32 LA | 34 TGA | 35 QBA | 35 TSA |
|--|--------|--------|---------|--------|---------|---------|--------|
| Overall Length (Approximate) | 27' 7" | 31' 3" | 32' 10" | 33' 5" | 34' 10" | 35' 10" | 35' 7" |
| Interior Height | 78" | 78" | 78" | 78" | 78" | 78" | 78" |
| Overall Width | 101" | 101" | 101" | 101" | 101" | 101" | 101" |
| Interior Width | 96" | 96" | 96" | 96" | 96" | 96" | 96" |
| Fresh Water (Gallons) | 53 | 53 | 53 | 53 | 53 | 53 | 53 |
| Black Water (Gallons) | 35 | 35 | 35 | 35 | 35 | 35 | 35 |
| Grey Water (Gallons) | 40 | 70 | 70 | 70 | 70 | 70 | 70 |
| LPG Tank (Gallons; can only be filled to 80% capacity) | 24 | 24 | 24 | 24 | 24 | 24 | 24 |
| Minimum Garage Height | 13' | 13' | 13' | 13' | 13' | 13' | 13' |
| Basement Storage (Cubic Feet) | 61 | 57 | 67 | 67 | 69 | 69 | 83 |

STRUCTURAL

STANDARD EQUIPMENT ON ALL MODELS:

- Laminated Floor, Sidewall & Roof
- Steel / Aluminum Reinforced Structure
- Full One-piece Fiberglass Roof Cap

EXTERIOR

STANDARD EQUIPMENT ON ALL MODELS:

- Fiberglass Front & Rear End Caps
- Tinted One-piece Windshield
- 4.0 kw Onan® Generator (Will operate only one roof A/C unit.)
- One 13,500 BTU High Profile Roof Coleman A/C (High Efficiency)
- Quiet A/C Roof-ducted System
- Double Electric Step
- 1/4" Thick Single Pane Windows
- Horizontal Mounted Wipers
- Heated Power Mirrors
- Gel-coat Fiberglass Walls
- Exterior Graphics & Paint
- Exterior Patio Light
- Manual Patio Awning
- Slideout Awning(s)
- Exterior Storage Doors with Gas Shocks
- Ridged Long-life Storage Boxes
- Single Handle Lockable Storage Door Latches
- Heated Water & Holding Tank Compartments
- Two 6 V Auxiliary Batteries
- Park Telephone Ready
- TV Antenna
- Cable Ready TV
- Black Holding Tank Flush System
- Exterior Rinse Hose/Shower
- Back-up Monitor
- 110 V Exterior Receptacle
- 110 V / 12 V Converter
- Undercoating
- Roof Ladder
- Wheel Liners
- External Tripod Satellite Hook-up

| | 28 DA | 30 DA | 32 BA | 32 LA | 34 TGA | 35 QBA | 35 TSA |
|--|-------|-------|-------|-------|--------|--------|--------|
| 5.5 kw Onan® Generator* (Gas Engine Only) | 0 | 0 | 0 | 0 | S * | S * | S * |
| 6.0 kw Onan® Diesel Generator** (FRED Chassis Only) | NA | NA | S ** | S ** | S ** | S ** | S ** |
| 7.0 kw Onan® Generator - Includes 50 Amp Service (Gas Engine Only) | 0 | 0 | 0 | 0 | 0 | 0 | 0 |
| Driver's Door with Power Window | 0 | 0 | 0 | 0 | 0 | 0 | 0 |
| Automatic Satellite | 0 | 0 | 0 | 0 | 0 | 0 | 0 |
| One 15,000 BTU High Profile Roof A/C with Heat Pump (Requires 5.5 or 7.0 Generator - Front Only) | 0 | 0 | 0 | 0 | 0 | 0 | 0 |
| 2nd 13,500 BTU High Profile Roof Coleman A/C (High Efficiency) | 0 | 0 | 0 | 0 | S | S | S |
| Side View Cameras Activated with Turn Signals | 0 | 0 | 0 | 0 | 0 | 0 | 0 |
| Full Body Paint | 0 | 0 | 0 | 0 | 0 | 0 | 0 |

*Gasoline 34 TGA & 35 TSA require a 5.5 or 7.0 kw Onan® Generator

**Standard on all FRED chassis models only

DRIVER'S COMPARTMENT

STANDARD EQUIPMENT ON ALL MODELS:

- Entry Floor Light
- Step Switch & 12 V Disconnect Switch
- Snack / Beverage Tray
- Non-powered Cloth Passenger & Driver Seats (Flexsteel®)
- Lighted Instrument Panel
- Single CD Player & AM/FM Stereo
- Passenger Slide Tray / Computer Drawer
- 12 V Dash Receptacle
- Tilt Steering Wheel
- Dual Dash Fans
- Windshield Privacy Curtain
- Color TV (Front)
- Fire Extinguisher

| | 28 DA | 30 DA | 32 BA | 32 LA | 34 TGA | 35 QBA | 35 TSA |
|--|-------|-------|-------|-------|--------|--------|--------|
| Powered Cloth Driver Seat (Flexsteel®) | 0 | 0 | 0 | 0 | 0 | 0 | 0 |
| 24" Digital Front Overhead TV (LCD not available on overhead TV) | S | S | S | S | S | S | S |

LIVING AREA/DINETTE

STANDARD EQUIPMENT ON ALL MODELS:

- Large Pull-out Storage Drawers in Booth Dinette
- Booth Dinette
- Cloth Swivel Chair
- Decorative Wall Hanging

| | 28 DA | 30 DA | 32 BA | 32 LA | 34 TGA | 35 QBA | 35 TSA |
|--|-------|-------|-------|-------|--------|--------|--------|
| Cloth Sofa Bed | NA | S | S | S | S | S | S |
| Cloth Air Coil® Hide-a-bed | NA | NA | O | O | O | O | O |
| Sofa in Place of Booth Dinette | O | NA | NA | NA | NA | NA | NA |
| DVD Player | O | O | O | O | O | O | O |
| Freestanding Dinette | O | NA | O | O | O | O | O |
| Drop-down Monitors in Bunk Beds | NA | NA | NA | NA | NA | O | NA |
| 32" LCD TV in Mid Section (Front overhead TV not available) | NA | NA | NA | NA | O | O | NA |
| 32" LCD TV Mid Section & 24" Digital Front Overhead TV (LCD not available on Overhead TV) | NA | NA | NA | NA | O | O | NA |

KITCHEN

STANDARD EQUIPMENT ON ALL MODELS:

- Single Lever Satin Nickel Sink Faucet
- Solid Surface Countertop Accent Edging
- 3-Burner Cooktop with Oven
- 8 Cu. Ft. Refrigerator
- Double Bowl Kitchen Sink
- Solid Surface Backsplashes
- Microwave

| | 28 DA | 30 DA | 32 BA | 32 LA | 34 TGA | 35 QBA | 35 TSA |
|--------------------------------|-------|-------|-------|-------|--------|--------|--------|
| Convection Microwave | O | O | O | O | O | O | O |
| Ice Maker in Refrigerator | O | O | O | O | O | O | O |
| Solid Wood Refrigerator Panels | O | O | O | O | O | O | O |

BATH

STANDARD EQUIPMENT ON ALL MODELS:

- Medicine Cabinet
- Skylight in Shower
- Satin Nickel Vanity Faucet
- Toilet
- Fiberglass Molded Shower

| | 28 DA | 30 DA | 32 BA | 32 LA | 34 TGA | 35 QBA | 35 TSA |
|---|-------|-------|-------|-------|--------|--------|--------|
| Additional Fantastic® Fan (Water Closet Only) | O | O | O | O | O | O | O |

BEDROOM

STANDARD EQUIPMENT ON ALL MODELS:

- Wardrobe
- Innerspring Mattress
- LPG Leak Detector
- Phone Jack
- Bed Comforter
- Carbon Monoxide Detector
- Bed Pillows

| | 28 DA | 30 DA | 32 BA | 32 LA | 34 TGA | 35 QBA | 35 TSA |
|---------------------------|-------|-------|-------|-------|--------|--------|--------|
| 20" Digital TV | O | O | O | O | O | O | O |
| Bedroom Day/ Night Shades | O | O | O | O | O | O | O |
| Mirrored Vanity | S | S | S | S | NA | NA | NA |

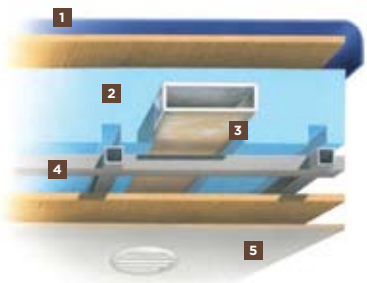
GENERAL INTERIOR

STANDARD EQUIPMENT ON ALL MODELS:

- Raised Panel Cabinet Doors
- Vinyl Headliner
- Medium Alderwood Solid Cabinet Doors & Drawer Fronts
- Wall-to-wall Vinyl Tile Flooring in Living Room, Kitchen & Bath
- Ball Bearing Drawer Slides
- Carpeting in Bedroom
- Scotchgard® Treated Carpet & Fabrics
- Day/Night Pleated Shades in Living Room
- Power Roof Vents
- Tank Level Monitor System
- Smoke Detector
- 6-Gal DSI Gas/ Electric Water Heater
(Electric not available on units with a 4.0 kw generator)
- Compartment Door with Single Point Latch

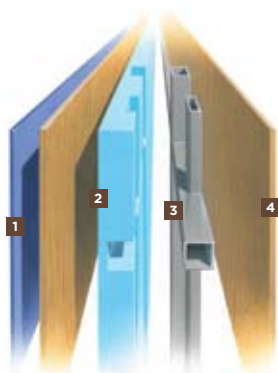
| | 28 DA | 30 DA | 32 BA | 32 LA | 34 TGA | 35 QBA | 35 TSA |
|---|-------|-------|-------|-------|--------|--------|--------|
| Vacuum Cleaner System | O | O | O | O | O | O | O |
| One 30,000 BTU Ducted Furnace | S | S | NA | NA | NA | NA | NA |
| One 35,000 BTU Ducted Furnace | NA | NA | S | S | S | S | S |
| Natural Maple Solid Cabinet Door & Drawer Front | O | O | O | O | O | O | O |
| Cherry Bark Solid Cabinet Door & Drawer Front | O | O | O | O | O | O | O |

CONSTRUCTION SPECS



ROOF

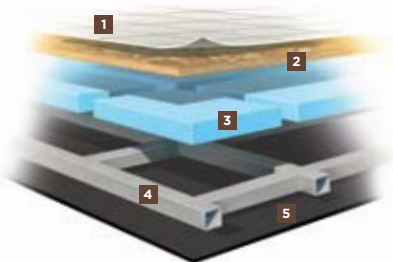
1. One-piece, moisture resistant molded fiberglass roof cap provides insulation and strength and prevents water intrusion
2. 5 1/2" high-performance thermal insulation
3. Quiet Air Cooling System with return air and cooling exhaust ducts foil-wrapped to deflect UV rays and repel heat
4. Durable, tubular steel roof skeleton
5. Easy-to-clean soft touch vinyl ceiling panel



SIDEWALL

1. Gel-coat fiberglass outside wall panel
2. High-performance thermal insulation
3. Durable, yet lightweight, tubular aluminum wall skeleton
4. Decorative inside wall panel

All sidewalls are approximately 2" thick



FLOOR

1. Tile flooring bonded to high-impact oriented strand board
2. High-level engineered oriented strand board
3. High-performance thermal insulation
4. Durable, tubular steel floor skeleton
5. Woven moisture barrier material

10-YEAR UNITIZED CONSTRUCTION LIMITED WARRANTY The structural integrity of the entire coach is guaranteed for the next 10 years. Warranty includes wall separation and inner frame weakness.

5-YEAR "HYDRA-VAC" LAMINATION LIMITED WARRANTY We guarantee against all exterior fiberglass delamination or wall separation.

TIFFIN MOTORHOMES, INC. 105 2ND STREET NW RED BAY, AL 35582
 CALL 256.356.8661 FAX 256.356.8219
 FOR PARTS AND SERVICE CALL 256.356.0261

For more specifics on what makes a Tiffin Motorhome, go to tiffinmotorhomes.com

The following names are registered trademarks of Tiffin Motorhomes: Open Road®, Phaeton®, Allegro®, Allegro Bay®, Allegro Bus®, Zephyr®, Roughing It Smoothly®, and Pusher®.