



Get your kicks.

# ULTRASPORT 2004

ILLINOIS MISSOURI KANSAS OKLAHOMA TEXAS NEW MEXICO ARIZONA CALIFORNIA



Hackberry General Store, Hackberry, Arizona



Damon — you can travel the world over and never find more motorhome for the money.





Model 3873, Midnight Taupe



From Chicago to L.A., Route 66 hyped neon-lit meter courts, curio wigwags, souvenir shops, gas stations, rattlesnake pits, local museums, truck stop cafés and trading posts like this long-abandoned relic near Paraje, New Mexico. Paraje is Spanish for "stopping place."





## BORN TO RUN.

Remember, getting there is half the fun, especially when you're traveling down America's greatest highways, such as storied Route 66, in first-class transportation like a luxurious Ultrasport™ Motorhome.

Ultrasport challenges the notion that luxury has to cost a fortune. And this hard-charging diesel roars down the highway with power and performance to spare. With more comfort and beauty than motorhomes priced thousands of dollars higher. No other motorhome offers you so much for so little.

NEW FOR 2004.

Ultrasport's towering 82-inch ceiling height is four inches taller than last year. Now, even your tallest friends fit comfortably inside your motorhome. Plus, walk-in slideouts are also taller for more headroom.

The Carrier® roof-mounted, ducted air conditioners have remote-controlled thermostats for easy adjusting from the interior comfort of your Ultrasport.

Ultrasport's raised rail chassis provides wide-open basement storage space. An optional sliding tray makes storing items much more convenient.







Model 3873, Midnight Taupe



## SCENIC OVERLOOK.

You'll be happy knowing that Ultrasport comes standard with a heavy-duty 10,000-lb. trailer hitch. It lets you tow a car or pickup, even the largest SUV (N/A on LE models).

Ultrasport is built on a powerful Freightliner® chassis with full air brakes, air ride and an Allison® transmission. Configured with either a Cummins® or a Caterpillar® engine, you'll have all the power you'll ever need.

The flat screen television in Ultrasport's cockpit overhead ensures that you'll be able to see your favorite programs, even in direct sunlight.

A premium AM/FM/CD player in the cockpit dash offers quality sound and makes your long drives more enjoyable. Option the Pioneer® XM-satellite radio tuner, and you get over 100 digital radio stations coast to coast — with no need to switch stations as you travel.

Ultrasport's optional Surroundsound® home theater system lets you really enjoy all of your favorite movies, no matter where you are. It comes complete with a Pioneer digital receiver, DVD player, satellite speakers and a sub-woofer with life-like bass.

An exceptional Flexsteel® ultra-leather captain's chair with 6-way power adjustment is optional, and lets you fine-tune the seat for even greater comfort.







Model 3873, Midnight Taupe







Model 3873, Midnight Taupe



LE Standard Deluxe Graphics Package



Ultrasport Standard Deluxe Graphics Package



Cashmere Taupe Full-body Paint Package





## COAST TO COAST COMFORT.

Start choosing your favorite paint color, floor plan, fabrics, styles and options.

No matter which model and design package you choose, you can be assured that every Ultrasport motorhome we make is built the same way — the right way — with high-quality materials, components and state-of-the-art construction techniques.

### PAINT

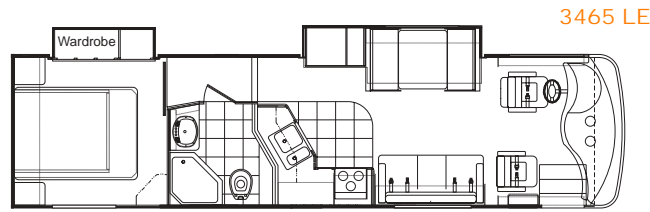
Option our automotive full-body exterior paint packages in a choice of three gorgeous colors. They give Ultrasport a distinctively upscale look, and few motorhomes in Ultrasport's class offer them.

### DÉCOR

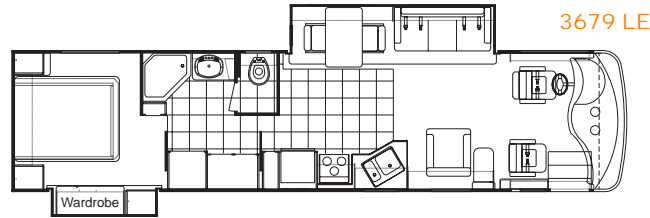
Damon offers several discriminating décor packages. Choose the one that lends a sense of your personality.

### FLOOR PLANS

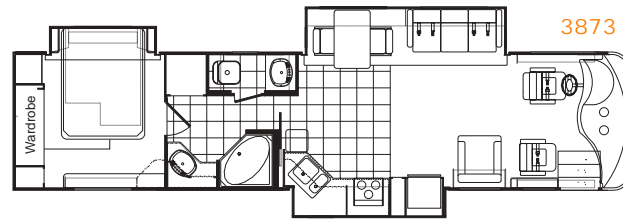
Damon offers a variety of floor plans and options. All provide the roomiest, most convenient mobile living experience you've ever had.



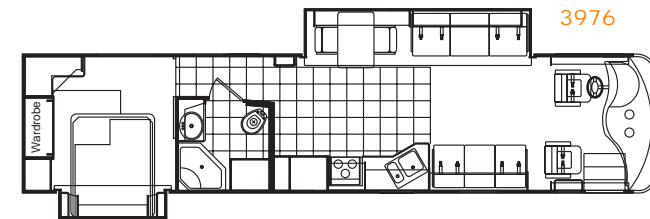
Living-area slideout • Closet slideout • L-shaped kitchen counter



Living-area slideout • Bedroom slideout • Lots of closet space



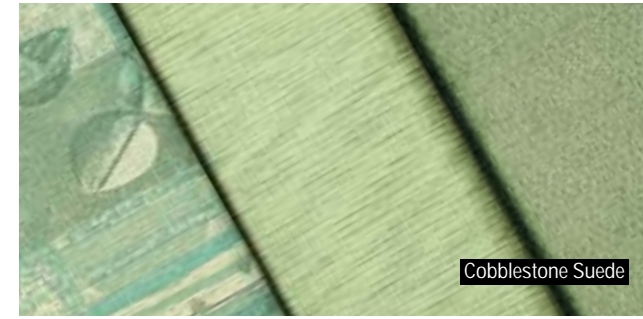
Triple slideout • Dual bath vanities • End-of-bed storage



Living-area slideout • Bedroom slideout • Floor-to-ceiling windows in hall • Washer/dryer ready



Champagne Toast



Cobblestone Suede



Cognac Caramel



Midnight Taupe



Crystal Blue Silver Full-body Paint Package



Burgundy Cashmere Full-body Paint Package



Maple



Oak

## HIGH, WIDE AND HANDSOME.

### THE SIDEWALLS

Walls are vacuum-bond laminated for added strength and rigidity.

Sidewalls are five layers thick, consisting of:

- Exterior fiberglass
- Lauan
- Aluminum frame
- Bead-foam insulation
- Interior wallboard

### UTILITIES

Travel in any season because of Ultrasport's heated holding tanks and fully contained plumbing systems. Tanks are mounted horizontally, making service and maintenance easy.

### BASEMENT AND STORAGE

The Ultrasport basement construction incorporates a strong, welded-steel truss system. The trusses span the full width to better distribute weight. They also allow for Ultrasport's full basement and massive pass-through storage compartments.

### FLOOR

A Structurwood® floor supports the living area. Framed in 1.5-inch welded-steel tubing, it's insulated with solid bead-foam insulation and protected with a galvanized underbelly, which inhibits rust and corrosion.

### CHASSIS

Quality construction starts here. And Ultrasport uses only the finest: a powerful Freightliner® chassis that can be ordered with either a Cummins® or a Caterpillar® engine.



## ROOF

Ultrasport's roof is vacuum-bond laminated for superior strength and rigidity. It features an aluminum rafter support system with bowed rafters to maintain the roof's crowned shape. A crowned roof permits better water runoff, which helps prevent leaks.

An optional one-piece fiberglass roof is seamless, eliminating the possibility of leaks and maintenance expenses.



## COMFORT AND JOY.

Now you don't have to store everything outside under your motorhome because Ultrasport offers vast interior storage possibilities. Like a convenient galley pantry with adjustable rollout shelves and storage bins.

Virtually eliminate maintenance costs by optioning Ultrasport's one-piece, seamless fiberglass roof.

An optional 10-gallon Motoraid® gas/electric water heater provides hot water immediately when you pull into camp by simply warming the water with the heat from the engine.

When ordered with the optional Sherwin Williams® full-body paint package, your Ultrasport will definitely turn heads and create a truly extraordinary motorhome.

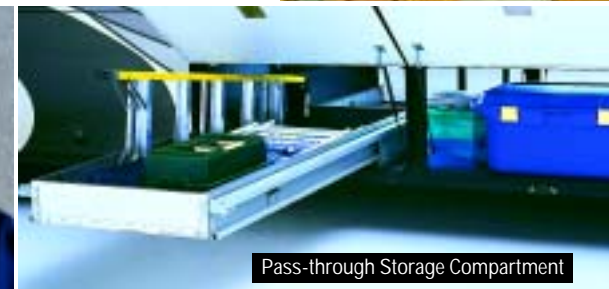
Ultrasport's convenient, rotocast storage compartment in the step well can be used as a cooler. Now you don't have to make a trip through the living room every time you want another drink.



Pantry



Carrier® Air Conditioner



Pass-through Storage Compartment





## SPECIFICATIONS AND FEATURES

For a complete list, visit [www.DamonRV.com](http://www.DamonRV.com).

<b>Bathroom</b>	<b>LE</b>	<b>UL</b>
Full-height fiberglass tub or shower with door	S	S
Skylight in shower	S	S
Power vent	S	S
Foot-flush porcelain toilet with sprayer	S	S
Medicine cabinet with solid-wood door and mirror	S	S
Wallpaper border	S	S
<b>Bedroom</b>	<b>LE</b>	<b>UL</b>
Innerspring mattress	S	N/A
Pillowtop mattress	O	S
Bedsprad with throw pillows	S	S
Diamond-beveled mirror with designer headboard	S	S
Lined wardrobe with mirrored doors	S	S
TV area and jack	S	S
Color TV	O	O
Lambrequin window treatments	S	S
Mini blinds	S	N/A
Day/night shades	O	S
Pin-up lights	S	S
AM/FM/CD player	O	O
<b>Chassis</b>	<b>LE</b>	<b>UL</b>
Raised-rail chassis	S	S
300-hp Cummins® ISB	S	S
330-hp Caterpillar® engine	N/A	O
In-block engine heater	S	S
Leece Neville® 160-amp, 12-volt alternator	S	S
Allison® MH-2000 automatic transmission — 5-speed	S	N/A
Allison® MH-3000 automatic transmission — 6-speed	N/A	S
Exhaust brake	S	S
Full anti-lock air brakes with automatic slack adjusters	S	S
Midland® Pure-Air Plus™ heated air dryer	S	S
Air-ride suspension	S	S
22.5-inch radial tires	S	S
Fully automatic leveling jacks with touchpad controls	S	S
Stainless-steel wheel liners	S	S
Full-width stainless-steel stone guard with Damon stencil	O	O
Trailer hitch	S	S
Emergency start circuit	S	S
Under-hood light	S	S
Dual fuel fills	S	S

<b>Cockpit</b>	<b>LE</b>	<b>UL</b>
Molded ABS dash	S	S
Electronically controlled dash air conditioning	S	S
Premium AM/FM radio with CD	S	S
Premium AM/FM/cassette radio with multi-disc CD changer	O	O
XM-satellite radio tuner	O	O
4-speaker sound	S	N/A
Premium 4-speaker system with powered subwoofer	N/A	S
Electronic cruise control	S	S
18-inch padded steering wheel	S	S
Douglas® tilt/telescoping steering column	S	S
Map lights	S	S
Dash fans	S	S
Air horns	O	S
Windshield privacy wrap	S	S
Front-mounted power mirrors with heat	S	S
Floor mats	S	S
Deluxe entry mats	O	O
Décor fabric reclining swivel captain's chairs	S	N/A
Ultra-leather reclining driver's seat with 6-way power	O	S
Ultra-leather reclining passenger seat	O	S
Ultra-leather reclining passenger seat with 6-way power and power footrest	O	O
3-point, wall-mounted seat belts	S	S
Storage cabinets above driver and passenger	S	S
Multi-positionable sun visors	S	S
Electric sun visors with one manual side shade	O	O
Backup monitor system with audio	O	S
Drink holders	S	S
<b>Exterior</b>	<b>LE</b>	<b>UL</b>
Graphics package	S	N/A
Deluxe graphics package with paint	O	S
Full-body paint package with coordinated slideroom awnings	O	O
Color-coordinated electric patio and manual front door awnings (requires full-body paint)*	O	O
Color-coordinated window awnings (requires full-body paint)*	O	O
Fog and driving lights	S	S
BriteTEK® TPO roof (N/A with full-body paint)	S	S
Seamless fiberglass roof (required with full-body paint)	O	O
Roof vents	S	S
Rear ladder	O	O

<b>Exterior (cont.)</b>	<b>LE</b>	<b>UL</b>
Aerodynamic front and rear fiberglass caps	S	S
Side-mounted manual patio awning*	O	O
Side-mounted manual front door awning*	O	O
Side-mounted awning over slideouts	S	S
Carefree® electric patio awning with remote control*	O	O
Carefree® manual front door awning*	O	O
Entry-assist lighted grab handle	S	S
High-gloss gelcoated fiberglass sidewalls	S	S
Black-framed radius-cornered windows	S	S
Black-framed, dual-pane windows	O	O
Two porch lights (one on each side)	S	S
Lighted, locking exterior storage compartments	S	S
Full basement pass-through storage	S	S
Easy-slide storage tray	O	O
Exterior entertainment center with 20" TV	O	O
RVQ grill	O	O
Diamond Shield® front paint film	O	O
<b>Kitchen</b>	<b>LE</b>	<b>UL</b>
Refrigerator: large flush-mounted, double-door	S	S
Refrigerator: large flush-mounted, double-door with icemaker	O	O
Refrigerator: side-by-side with icemaker IPO standard refrigerator and pantry	O	O
Refrigerator: solid-wood front (oak or maple)	O	S
3-burner range and oven	S	S
Cooktop IPO range and oven	O	O
Folding range cover	S	N/A
Corian® range cover	N/A	S
Mirrored backsplash behind stove (3465 LE floor plan only)	S	N/A
Microwave oven	S	S
Microwave/convection oven	O	O
Lighted power range hood and monitor panel with LPG readout	S	S
Double-bowl sink with oversized dish bowl	S	S
Sink covers	S	N/A
Two Corian® sink covers	N/A	S
Single-lever faucet with sprayer	S	S
Pantry	S	S
HP laminate countertop with Corian® edge	S	N/A
Corian® countertops	N/A	S
Solid-wood cabinet doors throughout (oak or maple)	S	S
Platinum-style cabinet hardware	S	S



<b>Kitchen (cont.)</b>	<b>LE</b>	<b>UL</b>
12" x 12" vinyl tile flooring	S	S
Plank flooring in kitchen and bath (oak or maple)	O	O
Ceramic tile flooring in kitchen and bath	N/A	O
Booth dinette with Corian®-edged table	S	O
Freestanding dinette with two chairs (N/A with 3465 LE floor plan)	O	S
Two folding chairs (available with freestanding dinette or buffet)	O	O
Buffet with two chairs and cabinet storage	N/A	O
Mini blinds	S	S
Fantastic® power vent	O	S
Fantastic® power vent with rain sensor	O	O
Wallpaper border	S	S
Fire extinguisher	S	S
<b>Living Area</b>	<b>LE</b>	<b>UL</b>
Recliner with footrest (décor fabric) (N/A with 3465 LE floor plan)	S	S
Recliner with footrest (ultra-leather) (N/A with 3465 LE floor plan)	O	O
Magic bed (ultra-leather)	N/A	O
Love seat (ultra-leather) (replaces recliner & lounge table)	O	O
Sofa bed (décor fabric) (3465 LE or 3976 floor plans only)	S	O
Sofa bed (ultra-leather) (3465 LE or 3976 floor plans only)	O	O
Hide-a-bed (décor fabric) (N/A with 3465 LE floor plan)	S	S
Hide-a-bed (ultra-leather) (N/A with 3465 LE floor plan)	O	O
Mini blinds	S	N/A
Day/night shades	O	S
100% nylon carpeting with stain treatment and padding	S	S
Flat-screen TV	S	S
Video package (VCR/DVD and control center) (N/A with home theater package)	O	S
TV sound through ceiling-mounted speakers	N/A	S
Home theater package (VCR, DVD/CD player and 5-channel Dolby® Pro-Logic receiver amplifier)	N/A	O
Decorator clock and mirror	S	S
Fabric ceiling	S	S
Living room pin-up lights	S	S
Aisle lights	S	S
Air conditioner: 13,500-BTU ducted center (front)	S	S

<b>Utilities</b>	<b>LE</b>	<b>UL</b>
Air conditioner: 13,500-BTU ducted center (rear)	O	S
Dual heat pumps with 15,000-BTU A/C	O	O
5-watt chassis solar battery charge	O	O
Furnace: 35,000-BTU electronic ignition, floor-ducted	S	S
Water heater: 10-gallon gas/electric with electronic ignition	S	S
Water heater: Motoraid® 10-gallon gas/electric with electronic ignition	O	O
Water heater bypass kit	S	S
Generator: 7.5 kW Onan® Quiet Diesel™	O	O
Generator: 7.5 kW Generac® Quietpact™	S	S
600-watt entertainment inverter (IPO 2500-watt inverter)	O	O
2500-watt inverter (IPO 600-watt inverter)	O	O
Converter: solid-state 75-amp, 12-volt	S	S
12-volt demand water pump	S	S
6-volt Thermoil® auxiliary batteries (two standard, four with 2500-watt inverter)	S	S
Electronic battery distribution center	S	S
Battery disconnect	S	S

<b>Utilities (cont.)</b>	<b>LE</b>	<b>UL</b>
50-amp, 120-volt service with marine-type detachable power cord	S	S
Energy management system	O	O
Exterior GFCI receptacle	S	S
Enclosed heated potable and holding tanks	S	S
Black-water tank flush	S	S
Three-way valve for tank/city water fill	S	S
Water filtration system in kitchen	S	S
Washer/dryer prep	S	S
Washer/dryer combo	O	O
Telephone and cable TV hookups	S	S
Pre-wired for roof-mounted satellite dish	S	S
DSS manual satellite dish	O	O
DSS auto-tracking satellite dish	O	O
DSS in-motion satellite dish	O	O
Exterior shower	S	S
Carbon monoxide, LP gas and smoke detectors	S	S

<b>Weights and Measures</b>	<b>3465 LE</b>	<b>3679 LE</b>	<b>3873</b>	<b>3976</b>
Chassis	Freightliner®	Freightliner®	Freightliner®	Freightliner®
Wheelbase	200"	228"	242"	252"
GVWR (lbs.)	26,850	26,850 - 27,910	29,410 - 31,000	29,410 - 31,000
Overall Length	35' 3"	38'	39' 5"	39' 5"
Overall Width	101"	101"	101"	101"
Overall Height with A/C	12' 7"	12' 7"	12' 7"	12' 7"
Fresh Water System (appx. gal.)	99	99	99	99
Grey Water (appx. gal.)	50	50	50	50
Black Water (appx. gal.)	50	50	50	50
LP (lbs.)	126	126	126	126
Sleeping Capacity	4	4	4	4
Std. Wt. (appx. lbs.)	20,445	22,075	24,351	23,501
Fuel Capacity (appx. gal.)	100	100	100	100

Due to constant product improvements, the specifications, component parts and standard/optional equipment are subject to change without notice or obligation. Product photography or diagrams may show equipment that is optional. Damon Motor Coach reserves the right to make changes in prices and models and to discontinue models without notice or obligation. Components, parts or chassis may have been manufactured at times other than the model year indicated. All capacities are approximate and dimensions are nominal. All dry weights are based on standard model features and do not include optional features or equipment. Various RV components and features may differ to conform to local codes. Due to EPA environmental restrictions, engine power and torque ratings may change mid-year.

DC 7/03 © 2003 Damon Motor Coach Printed in U.S.A.



S = Standard    O = Optional    N/A = Not available    \*Not available in some geographical locations    LE = 3465 and 3679 LE models    UL = 3873 and 3976 models



For over 70 years, Route 66 was a symbol of our collective motoring experience, more traveled than any other highway. The old road is gone now, but it will live forever in our memories. And it still beckons -- stretches of the highway, along with many restored roadside attractions, are waiting to be re-discovered.



*Yellowhorse Trading Company, Lupton, Arizona*



**DAMON**  
MOTOR COACH

P.O. Box 2888 • Elkhart, IN 46515  
Literature or Dealers: 574-389-0179 or 800-577-5692  
Customer Service: 800-860-3812  
Sales Department: 800-860-3812  
[www.DamonRV.com](http://www.DamonRV.com)