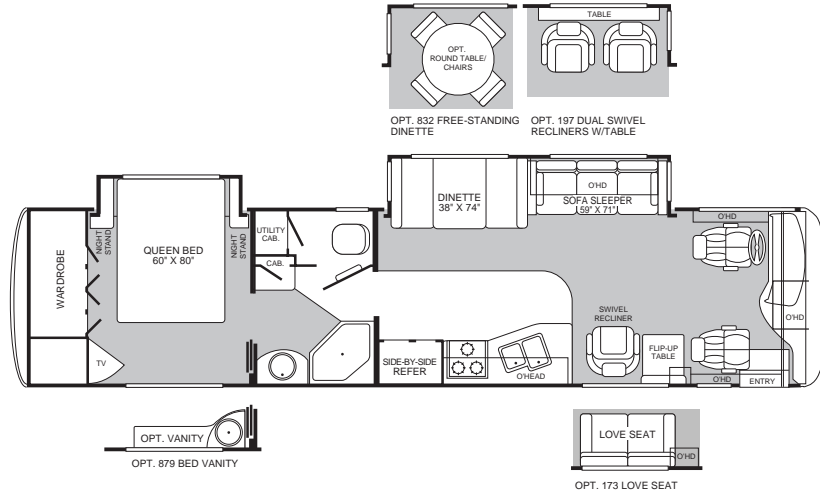


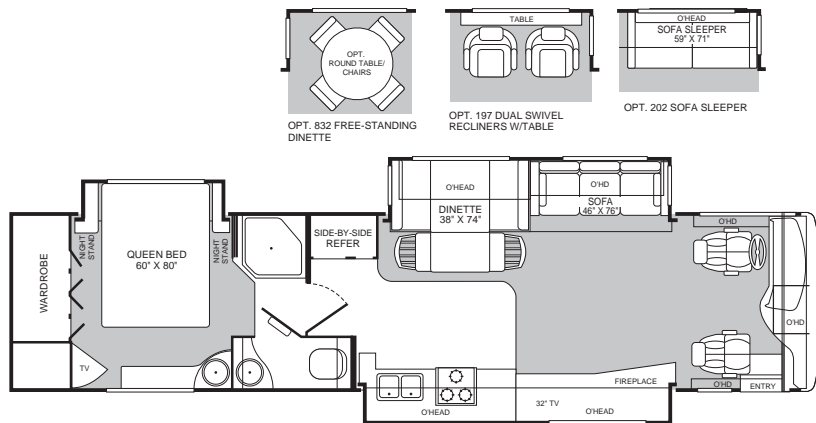
# EXCURSION™

*"You'll wish you were here!"*

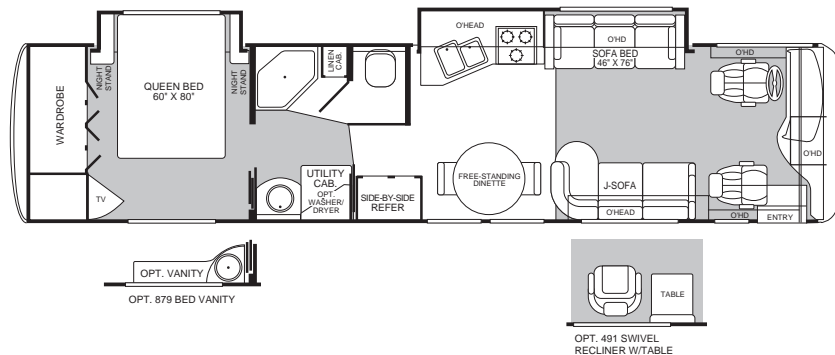
Model  
**38U**



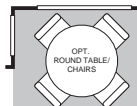
Model  
**39C**



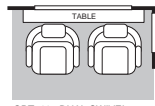
Model  
**39D**



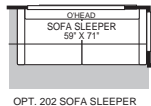
## Model 39J



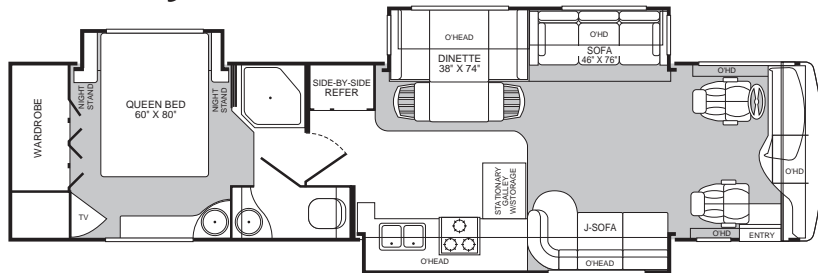
OPT. 832 FREE-STANDING DINETTE



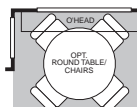
OPT. 197 DUAL SWIVEL RECLINERS W/TABLE



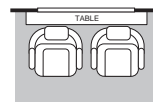
OPT. 202 SOFA SLEEPER



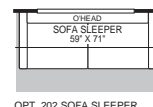
## Model 39L



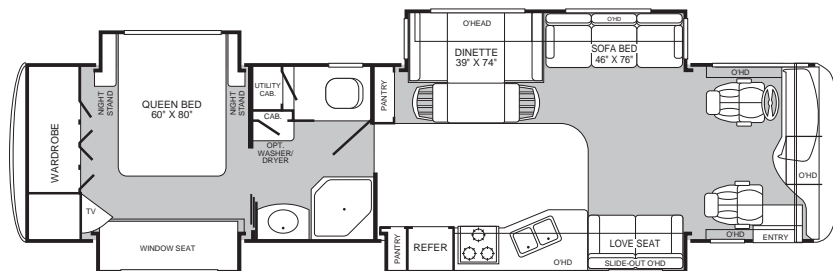
OPT. 832 FREE-STANDING DINETTE



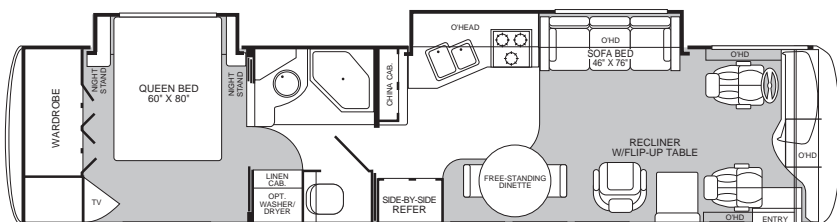
OPT. 197 DUAL SWIVEL RECLINERS W/TABLE



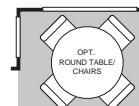
OPT. 202 SOFA SLEEPER



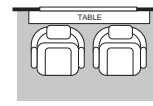
## Model 39P



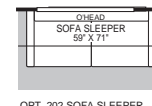
OPT. 879 BED VANITY



OPT. 832 FREE-STANDING DINETTE

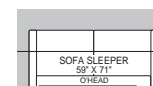
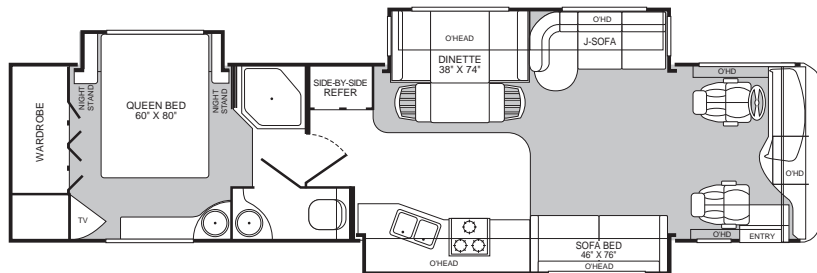


OPT. 197 DUAL SWIVEL RECLINERS W/TABLE



OPT. 202 SOFA SLEEPER

## Model 39S



OPT. 809 SOFA SLEEPER

# Standard and Optional Features

## Appliances

- Front 27" Panasonic® Stereo TV in Overhead (C-Model 32")
- Rear 20" Panasonic® TV
- KVH Auto Locating Satellite Dish
- Hi-Fi VCR
- Smoke Detector/Alarm
- LPG Detector/Alarm
- CO Detector/Alarm
- 20,000 BTU/25,000 (Dual) Furnace
- 10-Gallon, Quick-Recovery Water Heater with D.S.I. (Gas/Electric)
- 3-Burner, High-Output Cooktop w/Sealed Burners
- Light/Power Range Hood (Integrated into Microwave)
- Monitor Panel in Front Overhead
- Solid Surface Range Cover
- Dual Roof A/C High Efficiency w/Solar Panel on Front A/C
- Water Heater Bypass System
- Porcelain Toilet with Water Saver
- Toilet Tank San-T-Flush™ System
- 1.4 cu. ft. GE® Convection Microwave w/Stainless Steel Front
- 12 cu. ft. Side-by-Side Stainless Steel Dometic® Refrigerator
- Single-Lever Galley Faucet with Retractable Wand
- Water Filter with Faucet
- Demand Water Pump with Filter
- TV Antenna
- Fan-Tastic® Power Roof Vent – Galley and Bath
- Fire Extinguisher

## Appliances (cont.)

- Telephone Jack in Living Area and Bedroom
- Rear Speakers in Bedroom
- Coffeemaker
- Fireplace w/Heater (C-Model)

## Body Structure

- Vacu-Bond® Upper/Lower Floors
- Vacu-Bond® Walls with Smooth High-Gloss Exterior Fiberglass
- Radius Roof with Ducted A/C
- Royal Tuff-Ply™ Roof
- Aluminum Interlocking Floor/Wall/Ceiling Framing

## Electrical

- Doorside Patio Receptacle
- 120V/12V AC/DC Converter with 2000-Watt Inverter
- Central Electrical Panel
- 120V/12V Wire Raceways
- 3-Way Water Pump Switch
- 7.5kW Onan® Quiet Diesel Generator
- 50-amp Service
- Wall Switches
- EMS – Energy Management System
- Four 6V/Deep-Cycle 218-amp House Batteries

## Exterior

- Fiberglass Front/Rear Cap
- Fiberglass Front Quarter Panels
- Fiberglass Rear Wheel Well Trim
- Entry Door with Deadbolt Latch
- Slider Windows
- Torque Windows in Bedroom
- Utility Compartment with Exterior Shower
- 4-Point Manual Hydraulic Levelers
- Roof Ladder

## Exterior (cont.)

- Lighted Exterior Entry Assist Handle
- Remote Heated Rear View Mirrors
- 20' Sewer Hose
- Park Cable Receptacle
- Awning Rail/Drip Molding (Both Sides)
- Power Entry Step
- Dual Battery Charge Control
- Porch Light
- 3 Colorway Graphics to Match Decor
- Full Body Paint
- Front Mask

## Exterior Automotive

- Large, Curved Aerodynamic Bonded in Windshield
- Undercoating
- Aluminum Rims
- Valve Extenders
- Underhood Utility Light
- Steel Surface on Bulkhead
- Trailer Hitch with 7-Point Electrical Hook-Up\*
- Large Headlamps
- Rear Vision Camera
- Single Motor Windshield Wipers with Wet Arm
- Mud Flaps
- Fog Lamps
- Freightliner® Chassis
- 330 HP Caterpillar® Engine
- Roof Mounted Chrome Air Horns

## Exterior Storage

- Insulated Aluminum Luggage Doors
- Single-Paddle/Metal Latches
- Continuous One-Piece Bulb Seal

# EXCURSION™

## Exterior Storage (cont.)

- Hidden, Stainless Steel Latch Rods
- Hidden Lift Strut Supports
- Lighted Compartments
- Rotomolded Compartments

## Interior

- 2 Interior Decors
- Skylight in Tub/Shower
- Glass Shower Door
- Plush Wall-to-Wall Carpet w/Carpet Pad
- Wood Drawers
- Roller Guide Drawer Slides with Transit Ship Locks
- Cedar Lining in Wardrobe
- Radius Corner Cabinetry
- Coordinated Cabinet Hardware
- Pleated Day/Night Shades
- Bedspread with Decor Pillows
- Restonic® Pillow Top Innerspring Mattress
- Solid Surface Countertops
- Crown Molding w/Decorative Corner Caps
- Laminate Floor Tile in Galley & Bath
- Beveled Mirrors
- Slide-Out Dinette Bins with Locks
- Hardwood Bath Door/Trims
- Wood Table Tops (Dinette & Utility)
- Trash Basket in Galley
- Molded Tub/Shower Enclosure
- Coordinated Bath Accessories
- Residential Seat Styling
- Entry Rail (Lighted)
- Hardwood Raised-Panel Cabinet Doors
- Glass Panel Cabinet Doors (Selected Cabinets)

## Interior (cont.)

- Adjustable Cabinet Shelves (Selected Cabinets)
- Vinyl Padded Ceiling
- Sink Covers
- Solid Divider Doors
- Large, Double Stainless Steel Sink in Galley
- Stainless Steel Bowl in Lavy
- J-Lounge Ultraleather™ Sofa (39D only)
- Ultraleather™ Sofa Bed
- Ultraleather™ Swivel Recliner Free Standing

## Interior Automotive

- Intermittent Wiper Control
- Power Sun Visors
- Cruise Control
- AM/FM/CD Radio
- Auxiliary Start Circuit
- Battery Shut-Off Switch
- Auto A/C Heater Combo
- Radio Switch—Main/Auxiliary Power
- Soft-Surface Automotive Dash
- Driver/Passenger Ultraleather™ Captain's Chairs with Reclining Back/Slide Controls/power/heated
- Passenger Seat w/ Power Foot Rest
- Dash Fans
- Tilt/Telescoping Steering Wheel
- 3-Point Seat Belts on Driver/Passenger Seats

## Interior Lighting

- Wardrobe Lighting
- Fluorescent Lighting
- Decor Lighting

## Interior Lighting (cont.)

- Incandescent Lighting
- Wall Sconces
- Bedroom Lighting

## Platform Construction

- Basement Floor Configuration
- Heated Water & Holding Tank Compartments
- Polyethylene Luggage Compartment Boxes
- EZ-Store Compartment on Living Area Slide-Outs
- Power Platform
- Coach Vibration Isolators

## Optional Features

- 3-Burner Range with Oven
- Washer/Dryer
- Central Vacuum System
- CSA Package
- Awning—Weather Pro (Power)
- Spotlight with Remote Control
- Stereo AM/FM with 6 disc CD Player
- Stereo with AM/FM CD/Cassette
- Bedroom Radio
- Free-Standing Dinette with Chairs
- Panasonic® 5-Disc DVD Home Theater Sound System
- Ultraleather™ Love Seat with Ottoman (38 U only)

\* The chassis manufacturer recommends the installation of a supplemental brake control system to activate the brakes on the vehicle or trailer you are towing.

# Specifications

# EXCURSION™

Weights and Measurements	38U	39C	39D	39J	39L	39P	39S
Wheelbase	242"	252"	252"	252"	252"	252"	252"
GVWR (lbs) (1)	27,910	27,910	27,910	27,910	27,910	27,910	27,910
Front GAWR (lbs) (2)	10,500	10,500	10,500	10,500	10,410	10,500	10,500
Rear GAWR (lbs) (2)	17,500	17,500	17,500	17,500	17,500	17,500	17,500
Base Weight (lbs) (3)	21,555	22,605	21,755	22,605	22,900	21,755	22,605
GCWR (lbs) (4)	32,910	32,910	32,910	32,910	32,910	32,910	32,910
Hitch Rating (lbs)*	5,000	5,000	5,000	5,000	5,000	5,000	5,000
Tongue Weight (lbs)*	500	500	500	500	500	500	500
Fuel Capacity (gal)	90	90	90	90	90	90	90

## Chassis

Frame	Freightliner® XC-Series
Engine	Caterpillar® 3126E Turbocharged 7.2 ltr 330 hp Diesel
Torque	860 @1440
Transmission	Allison 3000 MH, 6-Speed w/Electronic Shifter
Alternator Amps	130 Amp Delco
Tires	Michelin XRV 255/80R 22.5 LRG

## Dimensions and Capacities

Overall Length (5)	38' 2"	39' 2"	39' 2"	39' 2"	39' 2"	39' 2"	39' 2"
Overall Height (with A/C)	12' 3"	12' 3"	12' 3"	12' 3"	12' 3"	12' 3"	12' 3"
Overall Width (maximum) (6)	102"	102"	102"	102"	102"	102"	102"
Interior Height (maximum)	79"	79"	79"	79"	79"	79"	79"
Interior Width (maximum)	96"	96"	96"	96"	96"	96"	96"
Fresh Water Holding Tank (gal)	86	86	86	86	86	86	86
Grey Water Holding Tank (gal)	50	50	65	50	50	50	50
Black Water Holding Tank (gal)	50	50	50	50	50	50	50
Appliance LPG Tank (gal) (WC) (7)	38	38	38	38	38	38	38
Water Heater Tank (gal)	10	10	10	10	10	10	10

Liquid Weight Reference	Water (gal) = (8.3 lbs/3.8 kgs)	Fuel (gal) = (7.1 lbs/3.2 kgs)	LPG (gal) = (4.2 lbs/1.9 kgs)
Metric Conversion	Multiply pounds x 0.453 to obtain kilograms		Multiply gallons x 3.785 to obtain liters

1. GVWR (Gross Vehicle Weight Rating): Means the maximum permissible loaded weight of the motor home. The GVWR is equal to or greater than the sum of the unloaded vehicle weight plus the net carrying capacity.
  2. GAWR (Gross Axle Weight Rating): Means the maximum permissible loaded weight a specific axle is designed to carry.
  3. Base Weight: Means the estimated weight of the motor home without fuel, options, water, cargo or passengers.
  4. GCWR (Gross Combined Weight Rating): Means the value specified by the motor home manufacturer as the maximum allowable loaded weight of this motor home with its towed vehicle. Towing and braking capacities may differ. Refer to Fleetwood and chassis manufacturer manuals for complete information.
  5. Length taken from front bumper to rear bumper (excludes accessories).
  6. Excludes safety equipment and awnings.
  7. Tank Manufacturer's listed water capacity (WC). Actual LPG capacity is 80% of water listing as required by the safety code.
- \* The chassis manufacturer recommends the installation of a supplemental brake control system to activate the brakes on the vehicle or trailer you are towing.

**IMPORTANT — PLEASE READ:** Product information, photography and illustrations included in this publication were as accurate as possible at the time of printing. For further product information and changes, please visit our website at [www.fleetwoodrv.com](http://www.fleetwoodrv.com) or contact your local Fleetwood dealer. Prices, materials, design and specifications are subject to change without notice. All weights, fuel, liquid capacities and dimensions are approximate. Fleetwood has designed its recreational vehicles to provide a variety of uses for its customers. Each vehicle features optimal seating, sleeping, storage and fluid capacities. The user is responsible for selecting the proper combination of loads (i.e. occupants, equipment, fluids, cargo, etc.) to ensure that the vehicle's capacities are not exceeded.

# Why would you buy anything else?

**FLEETWOOD RV**  
America's Favorite RV!

For every road you travel, Fleetwood has the RV to fit your high standards and lifestyle. We build the recreational vehicles America wants, accounting for nearly one out of every three RVs on the road today. How do we do it? We call it the **Fleetwood Equation**.

# Size + Service + Quality = Value!

## Size *The world's #1 RV manufacturer*

For over a half-century Fleetwood has grown to become the largest manufacturer of recreational vehicles in the world. Fleetwood remains, year after year, the largest, most influential, innovative and recognized leader in the RV industry.

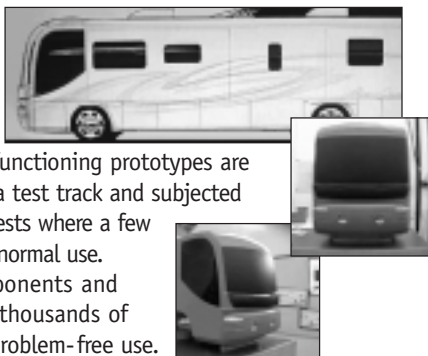
## Service *Listening to our customers*

With over 1,100 service dealers in the US and Canada, Fleetwood has the largest network in the RV industry. No other RV company comes close in equaling this vital customer support system. Fleetwood RV service dealers have instant, real-time electronic access to your service records as well as parts inventory and warranty repair authorization inquiries. We also provide a customer call center for service and product information so no matter where you travel in North America, professional support and fast answers are always nearby. Call toll free: **1-800-322-8216**.



## Quality *Using only the best materials*

At Fleetwood, quality begins at the design stage so every coach is built right, right from the start. Subsequent to design approval, full-functioning prototypes are built, then punished on a test track and subjected to accelerated life cycle tests where a few weeks can equal years of normal use. At the same time, components and systems are test-cycled thousands of times assuring years of problem-free use.



Once approved for production, each unit is built by skilled technicians using quality materials and components, many of which are sourced through, or manufactured by, our subsidiary companies such as Gold Shield Fiberglass and Continental Lumber Products.



Fleetwood engineers specify the very best products and appliances from companies such as Coleman®, Dometic®, Flexsteel®, Ford®, Freightliner®, Magic Chef®, Panasonic®, and Workhorse®. Companies that are experts in their respective fields and play a significant role as partners, not just suppliers.

All this assures that every Fleetwood RV has the fit, finish and details required by our high standards—as well as yours.

## Value *Priced right with style*

At Fleetwood RV, we look at value as the sum of everything we offer.

- **Value** is our design, engineering expertise, and innovative manufacturing methods.
- **Value** is structures and components that are the best in the industry, that meet or exceed government and industry safety standards.
- **Value** is Ownercare — a one-year/three-year warranty with coverage from a company that will be around in the future to service your needs. Ownercare is one of the RV industry's most comprehensive programs and includes systems and applications, construction, no deductible and no service charge. And it is fully transferable for the first 12 months. See your nearest Fleetwood dealer for a full explanation of benefits and restrictions.
- **Value** is customer satisfaction. When asked, more experienced RV owners would recommend Fleetwood to a friend than any other brand. Fleetwood RVs consistently hold their value better than most RVs at trade-in time.



**Value is peace of mind.**

**SSQV**—Size, Service, Quality, and Value. Together they equate to the very best RV you can buy, and the reason you should purchase a Fleetwood over any other brand.

Require these features when you purchase your next RV... Fleetwood does!

# SSQV

See you on the road!



Join Now!  
(877) 577-2560